



AMPing Up Advising and Mentoring at Beloit College

The Advanced Mentoring Program

Joy de Leon, EdD

Rachel A. Bergstrom, PhD

Beloit College, Beloit WI

Beloit
College

Beloit College: Who we are

Small, private, residential liberal arts college

Approx 1000 undergraduate students

Small Faculty (~88 FTE)

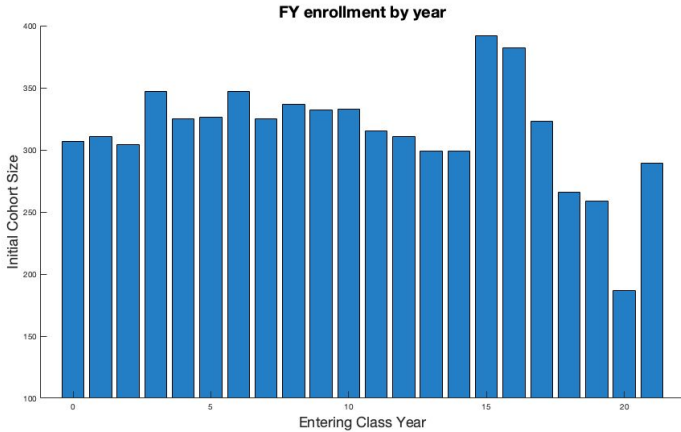


Beloit College: Who we are

	2019-2020	2020-2021	2021-2022
Total Degree-seeking Fall enrollment	1069	924	1106*
Total First Year Students	259	198	291*
Sophomore retention rate (representing previous year FY student)	79%	90%	87%*
Student:faculty ratio			~12:1

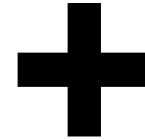


The Beloit College Strategic Plan: Summer 2019



Eric Boynton
Provost/Dean

Leslie Davidson
VP Enrollment



**Summer
Working
Group**

First- and Second-year Advising

Career Channels

Mission-Critical Implementation Teams

~25 faculty & staff to implement Fall 2019, spring 2020



High-impact advising at Beloit College

First Year Initiatives

1990 - 2018

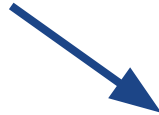
1-unit, topic-based class
in fall of first year



Spark

2019

Disciplinary introductory
course in fall of first year



The Advanced Mentoring Program

2020-present

Two-year advising and mentoring embedded across
the curriculum



AMPing Up the Advising Framework

AMP Intros

Disciplinary intro courses
with advising and
mentoring focus

AMP 100's

Traditional first-year
experience distributed
across 4 semesters

AMP Connections

Skills- and experience-rich
weekly seminars

The advising hour

2 x 1 hour/week, no other classes or activities
Making space for AMP classes and AMP
Connections

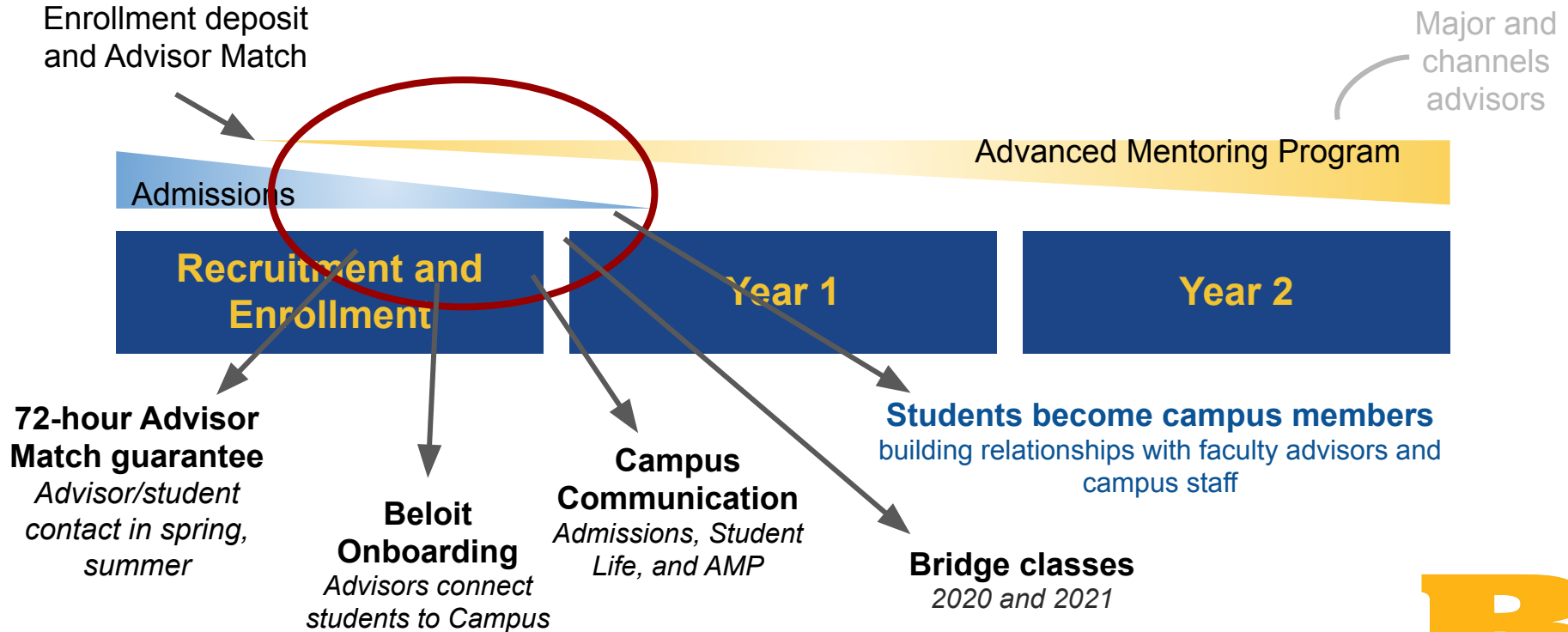


AMP Learning objectives - Year 1

- **Connecting students to Beloit** - the college and the community - to assist in navigating college life and building a sense of belonging
- **Identifying and practicing skills for success and well-being in college**, linking to skills for success in careers and life beyond college, especially ILOs
- **Self-reflection, exploration, building a personal narrative, and goal-setting** for a successful and rewarding life in college and careers



The Beloit College Early Advising Model



The Beloit College Strategic Plan (Summer 2019)

New Dean/provost, VP of enrollment

Note on Summer Working group, 1st and 2nd year charge, Career Channels (MCIT groups)

(Other outcomes: 6(?) career channels, revitalization of Career Works, stronger integration of academics and student life)

(Notes from fact book: declining enrollment, show FY enrollment graph, previous retention graphs from ellie?)

<https://www.beloit.edu/offices/institutional-research-assessment-planning/college-data/>)



Design and implementation: The importance of campus partnerships

Multiple points of Faculty, Staff, Student involvement

- Collaboration in design, implementation
- Build on existing structures
- Manage increasing load, decreasing office sizes
- Unification of Academic Affairs, Student Life (and handoff from admissions)



AMPing Up Campus Partnerships

Holistic mentoring requires broad campus collaboration!

- Enrollment, Academic Affairs, Student Life - Mentor Networks

Partnerships for AMP Connections

- Built around existing programming - Student Life
- Agility to respond to student needs, current events
 - (BLMB, Breonna Taylor decision, Election)
- Involving students in programming
 - Suggestions, Peer Mentorship opportunities



AMPing Up in a Pandemic

Early Match - Really, a huge bonus during COVID

- 70-80% of incoming students reported feeling confident, prepared for coming to campus

2020/21 - Virtual Learning experience supported summer activities

Summer Orientation and Registration

AMP Connections - increased interactions with support services on campus

Online AMP Classes in 2020/21 - a real challenge for both advisors and students

Assessment is challenging - AMP, Mods, the pandemic. How to disambiguate?





COVID AS CATALYST: AMP and Ongoing Innovation

- Handoff → shared responsibility
- Inclusive orientation
- Summer courses
- Anti-racist education
- Increased collaboration
- Space and energy for creativity in collaboration



AMP 200 Pilots (Fall 2021)

Course (Instructor Discipline)	Enrollment
STEM Origin Stories (Physics and Astronomy)	5
Finding Meaning (Philosophy)	15
From Beloit to Beyond (and Back) (Modern Languages)	11
Enemies of the People (Modern Languages)	6
Arts at Beloit: Practice, Community (Music)	9
175+ Years of Beloit College (History)	5
Strength of Weak Ties: Networking (Sociology)	7



Assessment and program outcomes

Caveat: 2020-2021 was covid year; hard to tease out AMP impact.

- Fall 2021 pivot to linked AMP Intro and AMP 100.

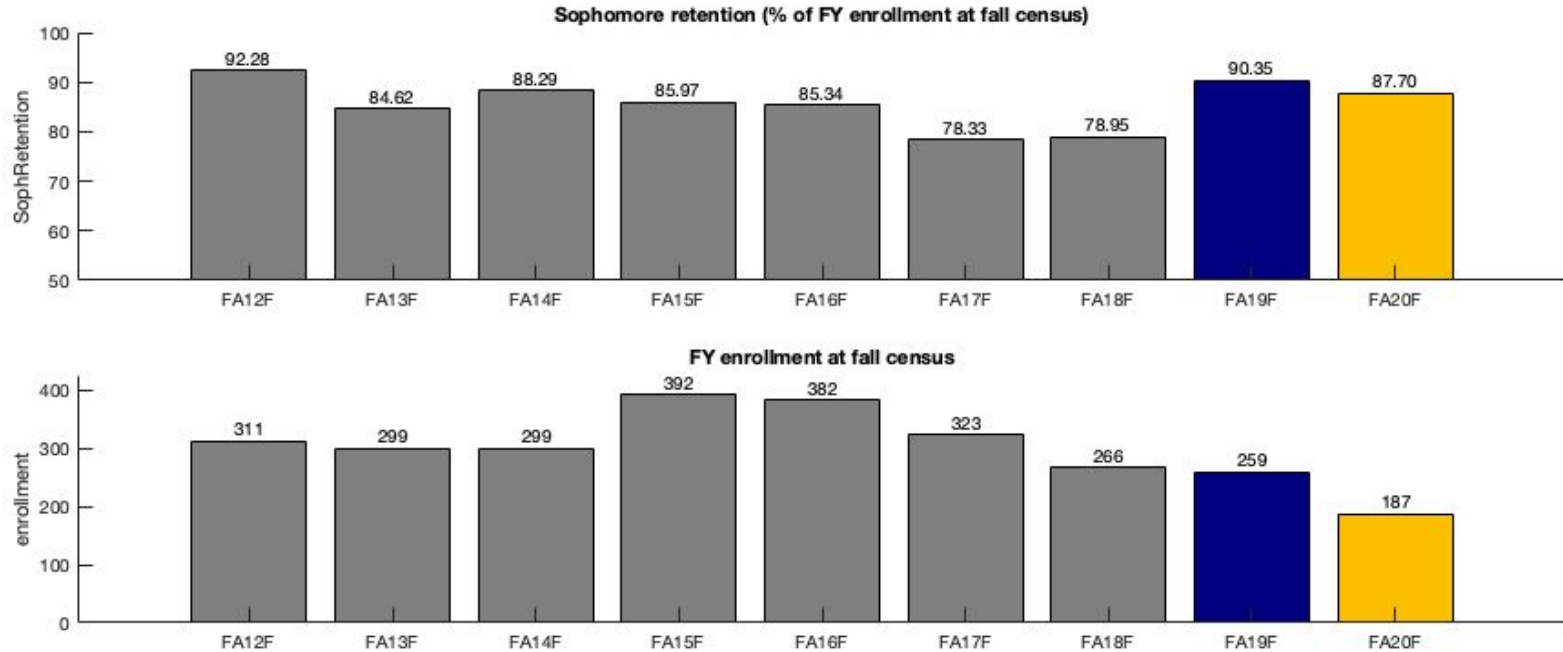
Fall 2021: We are not yet at census at the time of this recording.

Currently in progress:

- CR/NC for AMP in 2020-2021
- Program-wide analysis of course evaluations for AMP
- AMP Connections-specific assessment
- General institutional health metrics (recruitment, persistence, retention)



First-to-second year retention



AMP connections Reflection/evals

Reflections based on “minute papers”

- “What did you find helpful about the session?”
- “What do you want to know more about this topic?”

Suggestions for future sessions

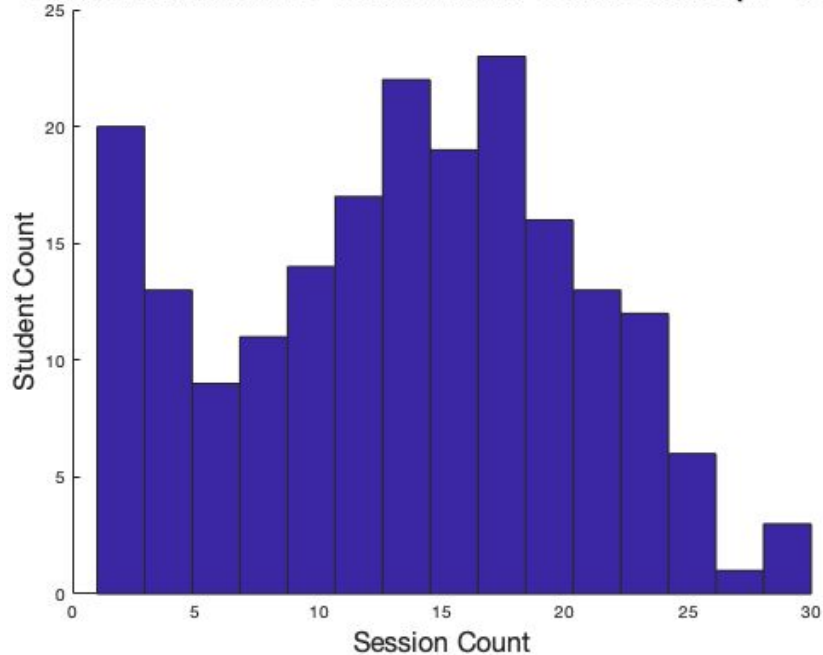
Basic quality of session (likert scale)

Attendance

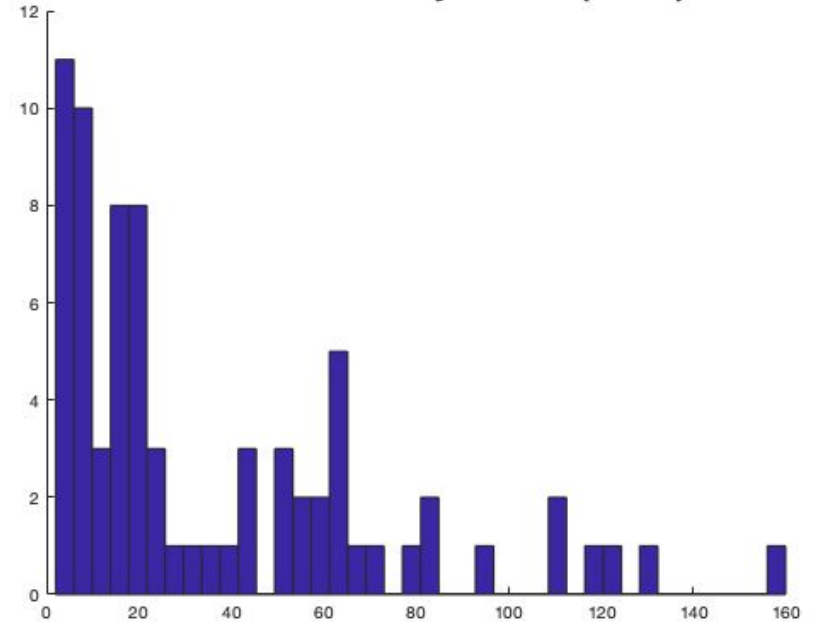


Are students attending these sessions?

Student Attendance Count at AMP Connections (n = 199)



Attendance count by session (n = 74)





Keys to successful implementation and life of AMP

- Campus partnerships
- Shared Responsibility for students (Wholistic)
- Flexibility
- Effective leadership and communication
- Careful assessment of student gains, program outcomes



Contacts



Rachel Bergstrom, PhD

Associate Professor of Biology

Co-director, AMP

Beloit College

bergstromr@beloit.edu

On sabbatical leave, Spring 2021



Joy de Leon, EdD

Associate Dean of Students

Co-director, AMP

Beloit College

deleonj@beloit.edu

